



Photo 1. Chevron Texaco abandoned coalbed methane exploratory well site, Coal Creek, Elk Valley, British Columbia, June 2004. From Flathead Basin Commission.



Photo 2. Chevron Texaco abandoned coalbed methane exploratory well site, Matheson Creek, Elk Valley, British Columbia, 2004. From Flathead Basin Commission.



Photo 3. Encana/StormCat coalbed methane exploratory well site, Elk Valley, British Columbia. From Flathead Basin Commission.



Photo 4. Chevron Texaco abandoned coalbed methane exploratory well site, Elk Valley, British Columbia. From Flathead Basin Commission.



Photo 5. Shell coalbed methane exploratory well site, Wheeler Creek, Elk Valley, British Columbia, June 2006. From Flathead Basin Commission.



Photo 6. Shell coalbed methane exploratory well site, Wheeler Creek, Elk Valley, British Columbia, December 2004. From Flathead Basin Commission.



Photo 7. Encana/StormCat coalbed methane pilot project, 2004, Elk Valley, British Columbia. From Citizens Concerned About Coalbed Methane.



Photo 8. Encana/StormCat coalbed methane pilot project, 2004, Elk Valley, British Columbia. From Citizens Concerned About Coalbed Methane.



Photo 9. Surface disposal of CBM wastewater draining to Elk River, Encana/StormCat coalbed methane pilot project, 2004, Elk Valley, British Columbia From Citizens Concerned About Coalbed Methane. From Citizens Concerned About Coalbed Methane.



Photo 10. Sediment-laden run-off from Chevron Texaco abandoned coalbed methane exploratory well site, 2003, Elk Valley, British Columbia. From Citizens Concerned About Coalbed Methane.



Photo 11. Sediment-laden run-off from Chevron Texaco abandoned coalbed methane exploratory well site, 2003, Elk Valley, British Columbia. From Citizens Concerned About Coalbed Methane.



Photo 12. Shell coalbed methane exploratory well site, Elk Valley, British Columbia. From Citizens Concerned About Coalbed Methane.



Photo 13 (above). Encana/StormCat CBM gas flaring equipment, Elk Valley, British Columbia. From Citizens Concerned About Coalbed Methane.



Photo 14 (right). Sediment-laden run-off from Chevron Texaco abandoned coalbed methane exploratory well site, Elk Valley, British Columbia, 2003. From Citizens Concerned About Coalbed Methane.



Photo 15 (above). Coalbed methane exploratory well site, Elk Valley, British Columbia. From Citizens Concerned About Coalbed Methane.

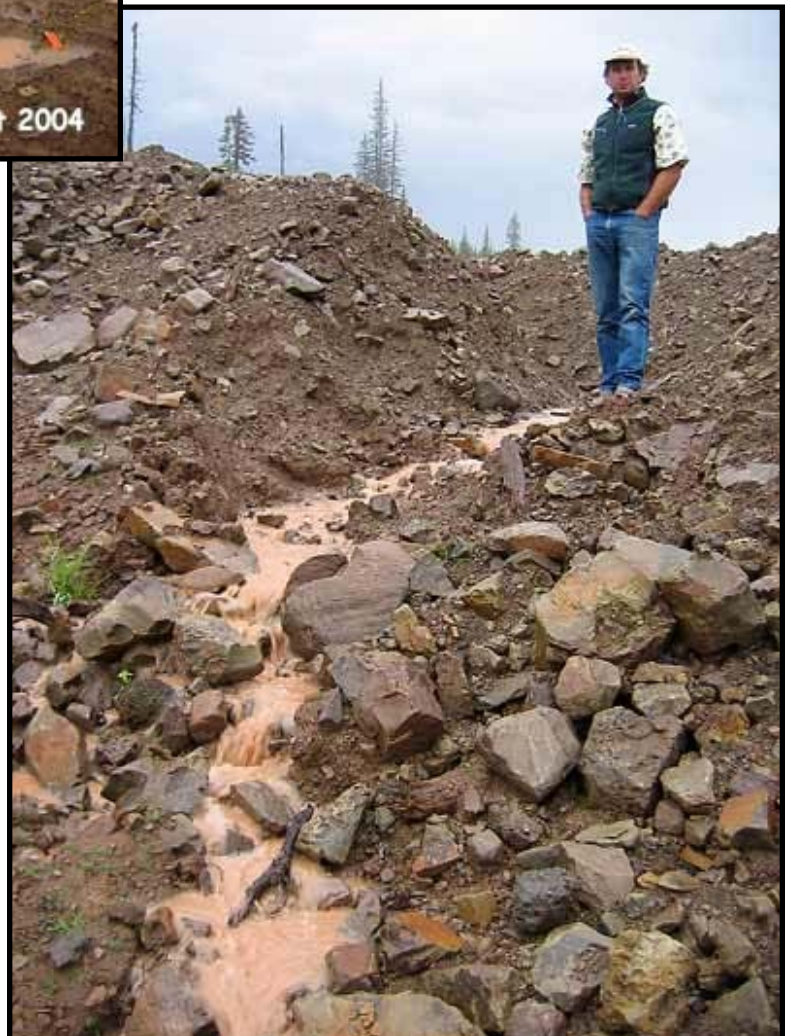


Photo 16 (above). Sediment-laden run-off from coalbed methane exploratory well site, Elk Valley, British Columbia, . From Citizens Concerned About Coalbed Methane.



Photo 17. Unlined waste pit, Shell coalbed methane exploratory well site, Elk Valley, British Columbia. From Citizens Concerned About Coalbed Methane.



Photo 18. Chevron Texaco abandoned coalbed methane exploratory well site, Elk Valley, British Columbia. From Citizens Concerned About Coalbed Methane.



Photo 19. Abandoned Chevron Texaco exploratory well site, Elk Valley, British Columbia. From Flathead Basin Commission.



Photo 20. Iron deposits at an Encana/StormCat CBM wastewater settling pond, Elk Valley, British Columbia. From Flathead Basin Commission.



Photo 21. Shell Canada Ltd.'s Wheel Creek coalbed methane site, collapsed and slumped into Wheeler Creek in heavy rains, southeast British Columbia. Photo by Erin Sexton. From Flathead Basin Commission.



Photo 22. Abandoned Chevron Texaco exploratory well site, Elk Valley, British Columbia. From Flathead Basin Commission.



Photo 23. Encana/Storm Cat iron residues in surface disposal of CBM wastewater. From Flathead Basin Commission.



Photo 24. Encana/StormCat exploratory CBM well site. From Flathead Basin Commission.



Photo 25. Encana/StormCat wastewater settling ponds, exploratory CBM well site. From Flathead Basin Commission.



Photo 26. Cow moose in Coal Creek, Elk Valley. From Flathead Basin Commission.



Photo 27. Encana/StormCat exploratory CBM well site. From Flathead Basin Commission.



Photo 28. Encana/StormCat exploratory CBM well sites. From Flathead Basin Commission.



Photo 29. A typically dense network of CBM well sites in the U.S.. From Citizens Concerned About Coalbed Methane.



Photo 30. A typically dense network of CBM well sites in the U.S.. From Citizens Concerned About Coalbed Methane.



Photo 31. Cline Mining Corporation bulldozed a seven kilometer road in the Foisey Creek drainage, headwaters of the Flathead, in February 2005. From Flathead Coalition.



Photo 32. The road to the Flathead Divide and the proposed Cline Mining Corp./Lodgepole open-pit coal mine, February 2005. From Flathead Coalition.



Photo 33. Hairpin switchback on climb towards Flathead Divide and the proposed Cline Mining Corp./Lodgepole open-pit coal mine, February 2005. From Flathead Coalition.



Photo 34. View from the height of Foisey Creek drainage, proposed site of Cline Mining Corp./Lodgepole open-pit coal mine, into the Flathead watershed, February 2005. From Flathead Coalition.



Photo 35. Cline Mining roadbuilding in the Foisey Creek drainage, February 2005. From Flathead Coalition.



Photo 36. Mud drains from raw Cline culvert towards North Fork of Lodgepole Creek, February 2005. From Flathead Coalition.



Photos 37 & 38. An open-pit coal mine in Southeastern British Columbia. Available at: http://www.em.gov.bc.ca/Mining/Geolsurv/Publications/expl_bc/1998/ex98sc.htm.